

FLOS

F018F22B018 Deep Brown

In Vitro Rod 2 NEW

Designed by Philippe Starck



13W - 799lm - 2700K - CRI> 80 - Beam° 111

Rod installation. Light source is included. Power supply ON/OFF or dimmable 220-240V is integrated within the ceiling base. Length: 390 mm.

Are you a professional and your project needs consulting and support?

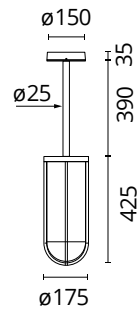
[BOOK AN APPOINTMENT](#)

Main specifications

| | |
|------------------|----------------------|
| EAN | 8059607736883 |
| Mounting | Suspension |
| Environments | Outdoor wet location |
| LED type | Edge Lighting |
| Number of heads | 1 |
| Power (W) | 13 |
| System power (W) | 13 |
| System flux (lm) | 799 |

Physical

| | |
|---------------------|------------|
| Colour | Deep Brown |
| Orientation | Fixed |
| Net weight (kg) | 4.5 |
| Package height (mm) | 270 |
| Package width (mm) | 270 |
| Package length (mm) | 960 |
| Package volume (m3) | 0.08 |



Download

[Mounting instructions](#) ZIP

Photometric Files

[LDT / IES](#) ZIP

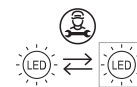
Technical Drawings

[2D](#) ZIP

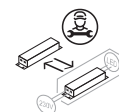
[3D](#) ZIP



Ecodesign and Energy Labelling

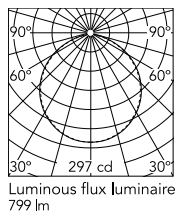


Replaceable (LED only) light source by a professional



Replaceable control gear by a professional

Schematic light drawing



Beam Angle: 111°

| h(m) | E(lx) | D(m) |
|------|-------|-------|
| 1 | 297 | 2.89 |
| 2 | 74 | 5.79 |
| 3 | 33 | 8.68 |
| 4 | 19 | 11.57 |
| 5 | 12 | 14.46 |

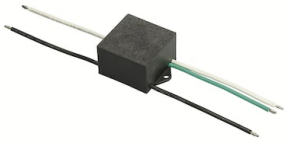
Photometric

| | |
|------------------------|-----------|
| Lighting type | Direct |
| Light distribution | Symmetric |
| CCT (K) | 2700 |
| CRI> | 80 |
| Beam angle C0-180 (°) | 111 |
| Beam angle C90-270 (°) | 111 |

Electrical

| | |
|--------------------|-------------------|
| Insulation class | I |
| Frequency (Hz) | 50-60 |
| Main voltage (Vac) | 220-240 |
| Driver | Integrated |
| Dimmable | Yes |
| Dimming type | Dimmable 1-10V |
| Dimming interface | Dimmer Integrated |

Accessories & Power Supply



OPTIONAL
Accessory

F990E00A000

S.P.D. (SURGE PROTECTION
DEVICE)